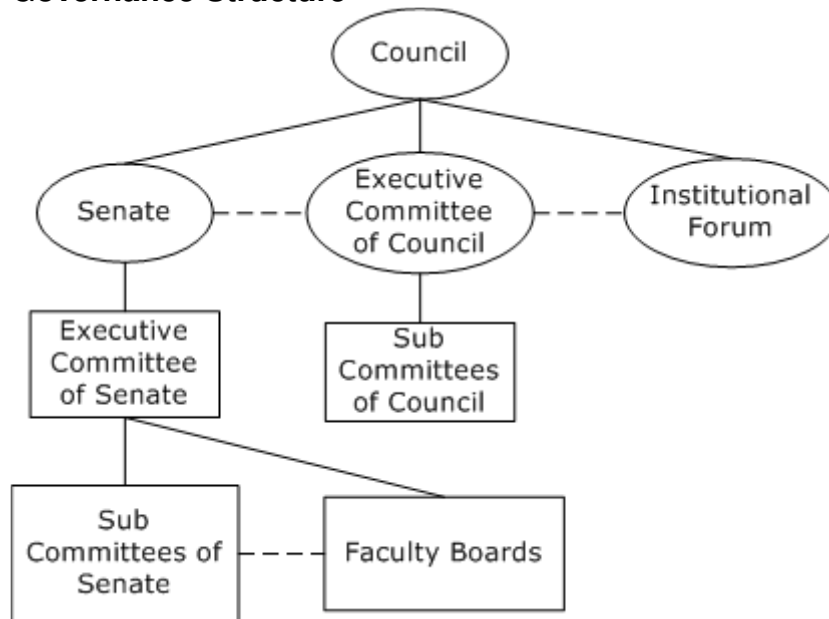


## Example: Governance structures at an HE Institution

Accessed from website in May 2008 [www.uwc.ac.za](http://www.uwc.ac.za) University of the Western Cape online

### Governance Structure



The governance structure of the university is represented in the following hierarchical tree.

#### Council

- **Council Committees**
  - Executive Committee of Council
  - Finance Committee (CF)
  - Audit Committee (CA)
  - Tender Committee (TC)
  - Remunerations Committee (RCEC)
  - Human Resources Committee (CHR)
  - Senior Appointments Committee (SACC)
  - Membership Committee (CM)
  - Senior Professors Committee
  - Gender Policy Action (GPAC)

- **Senate**

- Executive Committee of Senate (SEC)
- Assessment Committee (SAC)
- SAC Executive
- Higher Degrees Committee (SHD)
- SHD Executive
- Academic Planning Committee (SAP)
- SAP Executive
- Scholarships and Fellowships Committee (SSFC)
- Library Committee (SL)
- Research Committee (SR)
- International Relations Committee (SIR)
- Physical Resources Committee (SPR)
- Senate Lifelong Learning Committee (SLLC)
- Faculty Boards

- **Joint Committees of Council and Senate**

- Enterprise Architecture and Information Systems Committee (CISC)
- Risk Management Committee (CRMC)
- Student Development and Support Services Committee (SDSS)
- Joint Appointments Committee of Senate and Council (SA)
- Sub-Committee of the Appointments Committee (SUB-SA)
- Search Committee
- Accelerated promotions
- Personal promotions
- Full professors
- Honorary Degrees Committee (HDC)

- **Institutional Forum**

- Representatives of Student Representative Council (SRC)
- Representatives of Labour Unions
- Representatives of Senate

## **COUNCIL**

### **Composition:**

- The Rector
- The Vice-Rectors
- Five (5) persons appointed by the Minister of Education
- Two (2) members of the Senate (elected by the Senate)
- One (1) academic employee, elected by academic employees
- One (1) non-academic employee, elected by the non-academic employees
- Two (2) students, elected by the Students' Representative Council
- Two (2) donors
- One (1) member of the Council of the City of Cape Town (elected by the Council)
- Two (2) members of the convocation
- One (1) member of organised business in the Western Cape province (elected by organised business)
- One (1) member of organised business in the Republic of South Africa (elected by organised business)
- One (1) member of organised labour in the Western Cape province (elected by organised labour)
- One (1) member of organised labour in the Republic of South Africa (elected by organised labour)
- One (1) person designated by the premier of the Western Cape province
- A minimum of four (4) to a maximum of six (6) additional persons as may be determined by Council

### **Functions:**

The control, governance and executive authority of the University is vested in Council, which has particular responsibility for:

- Strategic governance
- Financial governance
- Staff matters
- Staff and student discipline
- The language and admission policies of the University

## **EXECUTIVE COMMITTEE OF COUNCIL**

### **Composition:**

- The Chairperson of Council
- The Vice-Chairperson of Council
- Two (2) members of the council (not being employees or students of the University, elected by Council)
- The Rector
- A Vice-Rector
- One (1) of the representatives of Senate on Council (designated by Senate)
- The academic employee on Council 8. The non-academic employee on Council
- One (1) of the students on Council
- A maximum of three (3) other members of Council (not being employees or students of the University), if Council so decides

## **SENATE**

### **Composition:**

- The Rector
- The Vice-Rectors
- Two (2) members of Council, elected by Council
- The Deans
- The Registrar
- The Executive Directors
- The Visiting, Extraordinary and Honorary professors (as decided upon by Council on the recommendation of Senate)
- The Directors of the different schools, centres and institutes (as decided upon by Council on the recommendation of Senate)
- The Chairpersons of the different academic departments or similar academic structures
- The professors of the University
- Eight (8) other academic employees (elected by the academic employees), at least one from each faculty
- Eight (8) non-academic employees (elected by the non-academic employees)
- Eight (8) students (elected by the Students' Representative Council), at least one from each faculty
- The University librarian
- A maximum of eight (8) more persons, as Council on the recommendation of Senate decides upon

### **Functions:**

Senate is responsible, and accountable to Council, for the general academic and research functions of the University, including:

- The superintendence and regulation of instruction and research
- The organisation and control of the curricula, syllabi and examinations
- performing other functions delegated or assigned to it by Council

### **EXECUTIVE COMMITTEE OF SENATE**

#### **Composition:**

- The Rector
- The Vice-Rectors
- The Registrar
- The Executive Directors
- The Deans
- The Director for Lifelong Learning
- One (1) academic representative from Senate
- One (1) non-academic representative from Senate
- One (1) student representative from Senate
- A maximum of two (2) other members of Senate

### **INSTITUTIONAL FORUM**

#### **Composition:**

- Three (3) representatives of Management
- Three (3) representatives of Senate
- Three (3) representatives of Council
- Three (3) representatives of the academic employees
- Three (3) representatives of the non-academic employees
- Three (3) representatives of the students, elected by the Students' Representative Council
- A maximum of four (4) additional persons (not being employees or students of the University)

**Functions:**

To advise Council on issues affecting the University, including:

- The implementation of the Higher Education Act and state policy on higher education policy regarding race, gender, disability and labour equity
- The selection of candidates for senior management positions
- Codes of conduct, mediation and dispute resolution procedures
- Fostering of a culture which promotes tolerance and respect for fundamental human rights and creates an appropriate environment for teaching, research and learning

**MANAGEMENT COMMITTEE**

**Composition:**

- The Rector
- The Vice-Rectors
- The Registrar
- The Executive Directors
- Such persons as may be determined by Council after consultation with the Rector and Senate

**Functions:**

The Management Committee controls, manages and administers the University from day to day and:

- Takes decisions subject to policy and other decisions taken by Council and Senate

In the event of urgency takes any decision in the interest of the University, provided that it immediately informs the chairpersons of Council, and the Institutional Forum Composition.